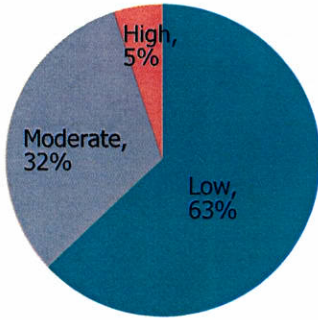


# 2017 YLS Data

## Venango County

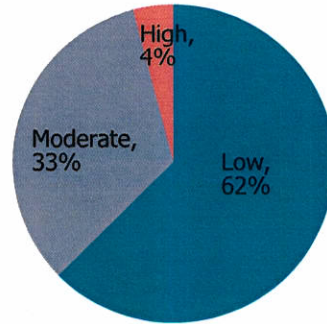
### Distributions

All Assessments



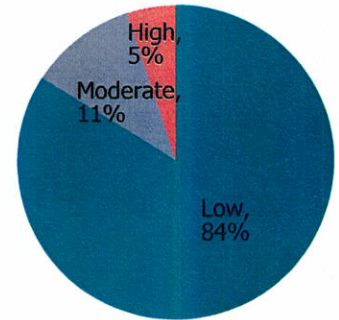
N= 151

Initial Assessments



N= 45

Closing Assessments



N= 38

### Additional Information

#### Top Scoring Domains On Initial Assessments\*

1. Personality & Behavior
2. Education/Employment
3. Substance Abuse

\*Excludes Leisure and Recreation



Total  
YLS Overrides

2 (1%)

#### 2017 Initial Dispositions

Total Informal Adjustment, Consent Decree,  
Probation, and Placement

63

Total Consent Decree, Probation,  
and Placement

56

Source:

Pennsylvania Juvenile  
Court Judges' Commission



pennsylvania  
JUVENILE COURT JUDGES' COMMISSION